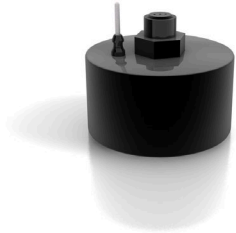
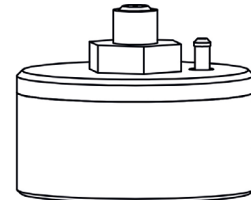
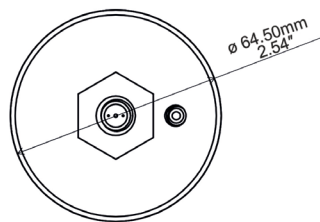
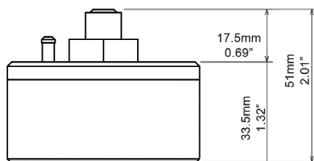


## Real Time Wireless Temperature and Pressure Data Logger with Rigid Sensor

0.01 BarA to 5 BarA  
-40°C to +140°C



- + Collects and transmits real time pressure and temperature to XpertLog Software
- + ITS-90 calibration coefficients are stored in the internal memory
- + Complies with FDA 21 CFR Part 11
- + Network ready: multiple users, centralized, server database, active directory authentication
- + Can be remotely activated

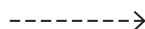


Sensor type	Absolute pressure / Temp: 4 wires PT-100
- rigid	20 mm (0.8")
- customized	available
- Sensor size	1.5 x 8 mm (0.06 x 0.315")
- cross section	1.77 mm <sup>2</sup> (0.0027 inch <sup>2</sup> )
Operating Range	
- body	0.01 BarA to 5 BarA
- Sensor	-40°C to +140°C
Accuracy	-40°C to +140°C
	±10 mbar ≤ 3 BarA @ 130°C; ±15 mbar > 3 BarA @ 130°C; ±15 mbar ≤ 3 BarA @ 23°C; ±30 mbar > 3 BarA @ 23°C; ±0.1°C from -40°C to +140°C
Resolution	0.1mbar; 0.01°C
Memory capacity	16,000 data points pressure / 16,000 data points temperature
Memory type	non volatile
Sampling rate	1 sec to 24 hours
Transmission	simultaneous: maximum 20 loggers
	sequential: unlimited
Internal clock drift	4 sec / 24 h @ 23°C
Mechanical	
- material	Peek 1000 - FDA compliant
- enclosure	IP-68
- weight	117 g (4.13 oz)
- diameter	64.50 mm (2.54")
- height	51.0 mm (2.01") / 72.0 mm (2.83")
Power	2 x Lithium batteries, 0.35 g/each Lithium content classified UN3091 under IATA DGR section 3.9.2.6 compliant with ICAO/IATA packing instructions 970, user replaceable
Battery lifetime	Up to 6 months, based on usage
Antenna	Internal
Wireless range	121 m (400 feet)
Radio frequency	2.4 Ghz ISM band
Access point	USB to computer
Calibrations	Programs and reads unlimited number of loggers
	Factory Calibrations: traceable NIST/COFRAC - ITS-90 coefficients stored in the internal memory
	User Calibrations: closed loop calibration using XpertLog® software
Certification	Health Safety: EN 60950-1 / 2006
	EMC: EN 60601-1-2 / 2007
	RF: EN 300440-2 v1.3.1 (2009-03)

Order Reference  
GMP-RF-TP

Standard Calibration Points  
hysteresis at 23°C and 130°C:

- 0.05 BarA
- 0.50 BarA
- 1.00 BarA
- 1.50 BarA
- 2.00 BarA
- 2.50 BarA
- 3.00 BarA
- 3.50 BarA
- 4.00 BarA
- 4.50 BarA
- 5.00 BarA



XpertLog  
software

