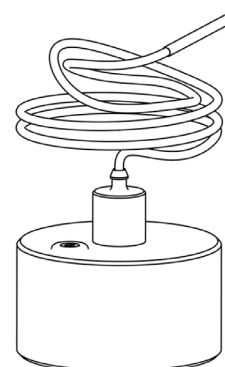
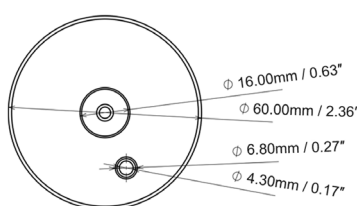
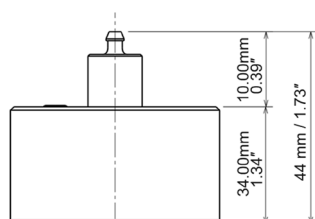


Real Time Temperature Data Logger with Flexible Sensor -40°C to +85°C



- + Collects and stores temperature information in the internal memory
- + Recover the data through the docking station using XpertLog Software
- + ITS-90 calibration coefficients are stored in the internal memory
- + Complies with FDA 21 CFR Part 11
- + Network ready: multiple users, centralized, server database, active directory authentication
- + Calibration can be performed on site



Sensor type	4 wires PT-100
- flexible	930 mm (36.5")
- customized	up to 5000 mm (195")
- Sensor size	1.5 x 8 mm (0.06 x 0.315")
- cross section	1.77 mm ² (0.0027 inch ²)
Operating Range	
- body	-40°C to +85°C
- Sensor	-200°C to +200°C
Accuracy	±0.1°C from -40°C to 85°C
Resolution	0.01°C
Memory capacity	32,000 data points temperature
Memory type	non volatile
Sampling rate	1 sec to 24 hours
Transmission	simultaneous: maximum 20 loggers sequential: unlimited
Internal clock drift	4 sec / 24 h @ 23°C

Mechanical	
- material	Pek 1000 - FDA compliant
- enclosure	IP-51
- weight	95 g (3.35 oz)
- diameter	60.0 mm (2.36")
- height	44.0 mm (1.73")

Power	External and internal, 2 x Lithium batteries, 0.35 g/each Lithium content classified UN3091 under IATA DGR section 3.9.2.6 compliant with ICAO/IATA packing instructions 970, user replaceable Up to 6 months, based on usage
-------	---

Battery lifetime	Up to 6 months, based on usage
Antenna	Internal
Wireless range	121 m (400 feet)
Radio frequency	2.4 Ghz ISM band
Access point	USB to computer
Calibrations	Programs and reads unlimited number of loggers Factory Calibrations: traceable NIST/COFRAC - ITS-90 coefficients stored in the internal memory User Calibrations: closed loop calibration using XpertLog® software
Certification	Health Safety: EN 60950-1 / 2006 EMC: EN 60601-1-2 / 2007 RF: EN 300440-2 v1.3.1 (2009-03)

Order Reference
LMS-RF-F

Standard Calibration Points

- -40°C
- 0°C
- 85°C



----->

XpertLog
software

----->

