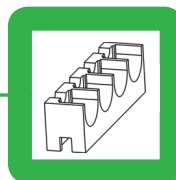


# Standard Data Logger GDP TH



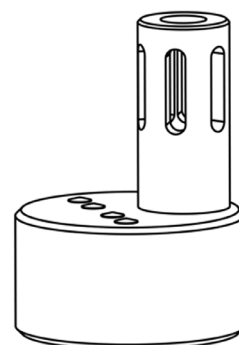
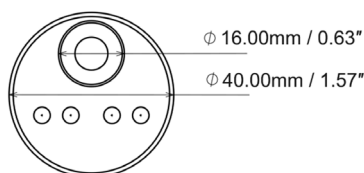
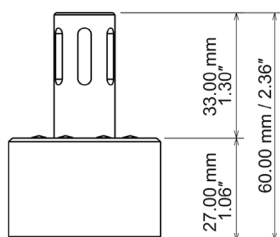
## Wireless Temperature and Humidity Data Logger with Rigid Sensor

15% to 95% RH

-40°C to +85°C



- + Collects and stores humidity and temperature information in the internal memory
- + Recover the data through the docking station using XpertLog Software
- + ITS-90 calibration coefficients are stored in the internal memory
- + Complies with FDA 21 CFR Part 11
- + Network ready: multiple users, centralized, server database, active directory authentication



Sensor type	Hum: capacitive / Temp: 4 wires PT-100
- rigid	20 mm (0.8")
- Sensor size	1.5 x 8 mm (0.06 x 0.315")
- cross section	1.77 mm <sup>2</sup> (0.0027 inch <sup>2</sup> )
Operating Range	
- body	15% to 95% RH
	-40°C to +85°C
- Sensor	-40°C to +85°C
Accuracy	±2.0% RH @ +23°C (15% - 60% RH)
	±3.0%RH @ +23°C (60% - 95% RH)
	±0.1°C from -40 °C to 85 °C
Resolution	0.01% RH
Memory capacity	16,000 data points humidity / 16,000 data points temperature
Memory type	non volatile
Sampling rate	1 sec to 24 hours
Internal clock drift	4 sec / 24 h @ 23°C
Mechanical	
- material	POM-C; FDA compliant
- enclosure	IP-51
- weight	45 g (1.58 oz)
- diameter	40.0 mm (1.57")
- height	60.0 mm (2.36")
Power	1 x Lithium batteries, 0.35 g/each Lithium content classified UN3091 under IATA DGR section 3.9.2.6 compliant with ICAO/IATA packing instructions 970, user replaceable
Battery lifetime	Up to 12 months, based on usage
Docking station	USB to computer
	4, 8, 12 and 20 ports available
Calibrations	Programs and reads unlimited number of loggers
	Factory Calibrations: traceable NIST/COFRAC - ITS-90 coefficients stored in the internal memory
	User Calibrations: closed loop calibration using XpertLog® software
Certification	Health Safety: EN 60950-1 / 2006
	EMC: EN 60601-1-2 / 2007

### Order Reference

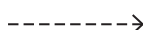
GDP-TH

### Standard Calibration Points

- 25°C / 20% RH
- 25°C / 45% RH
- 30°C / 65% RH
- 40°C / 75% RH

Upon special request:

- 45°C / 90% RH



XpertLog  
software

